
Cloud Client Manager

Securely embrace consumerized IT,
alongside traditional end user service delivery.



Best in breed - from end to end

Infrastructure

PowerEdge 12G servers run 50% more virtual machines*

Market-leading fluid data storage architecture

Network solutions perfect for virtualized environments

Software

Management with your choice of on-premise or cloud console

Optimized user experience without replacing native protocol

Accelerate protocol performance by up to 20x without costly hardware

End Points

Industry's only line of virus immune thin and zero clients

Broadest range of PC and thin/zero client devices

PC as thin client SW extends the life of PC assets

Services and Cloud

*compared to prior PowerEdge generations



How we work is changing...



77%

Smartphones used at work
chosen by an employee ³



1.84B

shipments for smart connected
devices by 2016 ²



50%

Workers in US share devices
for personal and work use ¹



3.3

Average number of devices
owned in consumerized
environment ⁴

Traditional view of enterprise IT

IT for Work - Business

**Corporate owned
and managed**

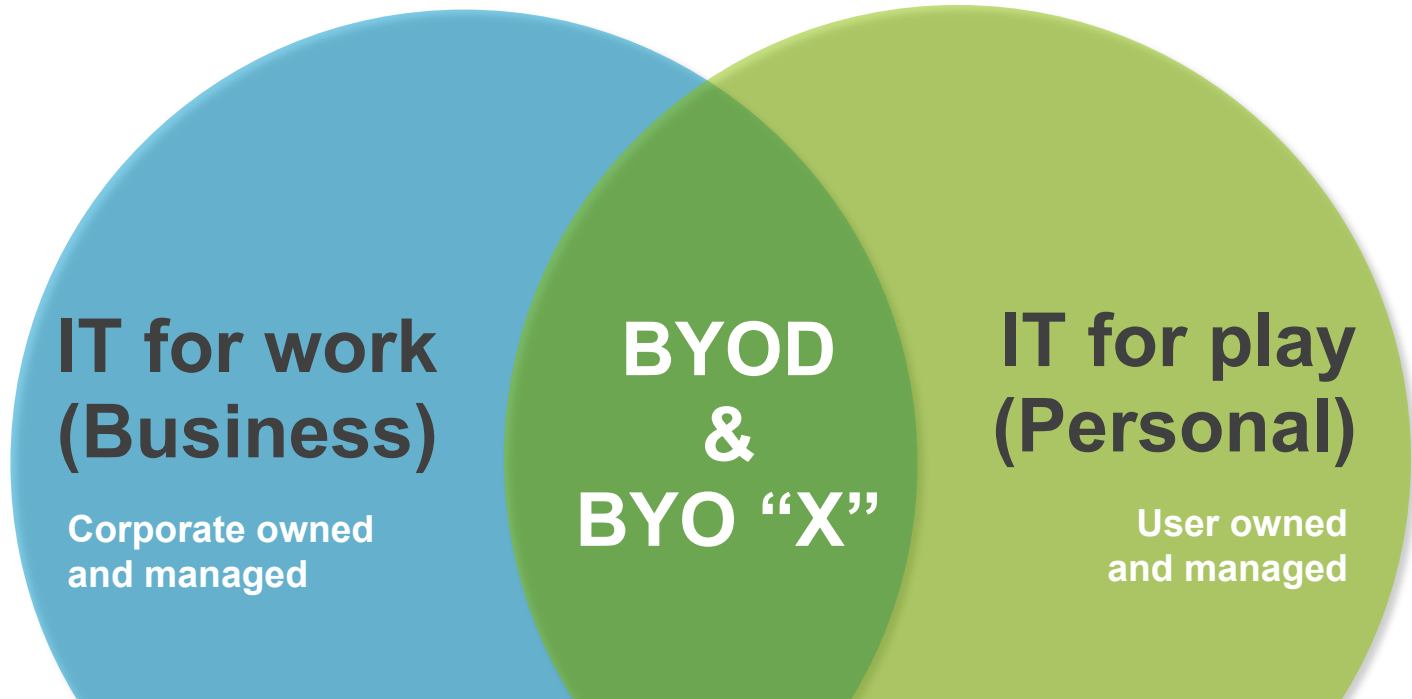
IT for Play - Personal

**User owned
and managed**

Business IT and Personal IT do not mix!

“Keep your toys at home”

Current & future view of IT: “Consumerized”



*Prepare to manage a hybrid environment.
BYOD is only growing in volume & scope;
extending beyond devices, to applications and services*

Many scenarios, one solution



Cloud Client Manager

- ✓ Manage & Secure Devices
- ✓ Configure & Deploy Apps
- ✓ Proactive Reporting & Support

Fully Managed

- ✓ Ensure Device Compliance
- ✓ Deliver/Revoke Services
- ✓ Separate Corporate from Personal

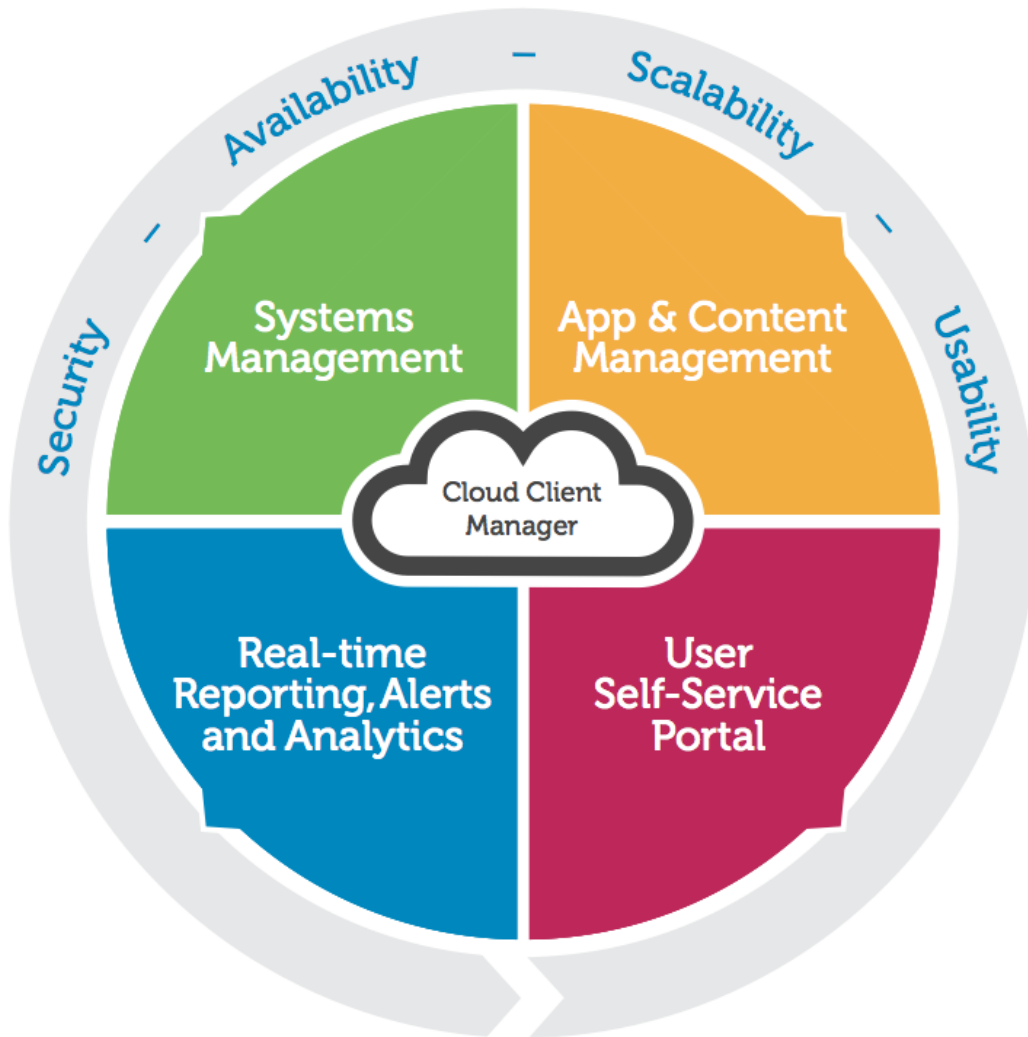
BYOD

- ✓ Self-Service Access
- ✓ Support on Any Device
- ✓ Secure “Enterprise” Container

Self-Service

***One, simple console to support a wide range of scenarios.
Up and running in minutes, no hardware required!***

Solution overview



Dell Wyse Cloud Client Manager is a software as a service offering that empowers IT to securely manage end user devices, applications and content from a single, simple console while empowering end users with policy driven self-service capability.

The web based console provides four core areas of functionality:

- ✓ **Systems Management**
- ✓ **Application & Content Management**
- ✓ **User Self-Service Portal**
- ✓ **Real-time Reporting, Alerts & Analytics**

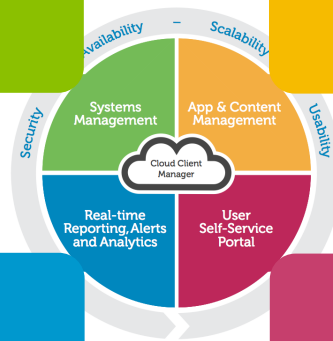
Solution overview

Systems Management

- ✓ Secure, OTA device registration from anywhere
- ✓ Asset inventory , real-time reporting and alerting
- ✓ Dell Wyse thin clients: ThinOS™ and Xenith™
- ✓ Mobile devices: iOS & Android smartphones/tablets

App & Content Management

- ✓ Centralized application inventory
- ✓ Application policy enforcement (whitelist/blacklist)
- ✓ Simple enablement of remote desktops/apps/content
- ✓ Dell Wyse PocketCloud™ integration




Real-time Reporting & Alerts

- ✓ Real-time reporting and policy compliance alerts
- ✓ Contextually summarized events for faster insight
- ✓ Simple filter and searching through historical events
- ✓ Detailed audit trails for user and admin functions

User Self-Service Portal

- ✓ Self onboarding of new devices
- ✓ View currently registered devices
- ✓ View policies applied to devices
- ✓ Locate/Lock/Wipe devices (lost phone mitigation)


Unified, user-centric platform.

 Wyse Cloud Client Manager

WyseAdmin@wyselab.com Sign out ?

DashboardGroupsUsersDevicesApplicationsEvents

User DetailsChange GroupEdit UserDeactivate User



Name
Satya Mylvara

Title
Unknown Title

Group
Engineering

Login Name
smylvra@wyselab.com

Email Address
smylvra@wyselab.com

Compliance Status
✖

SummaryEventsInstalled Apps

NotesAdd Note

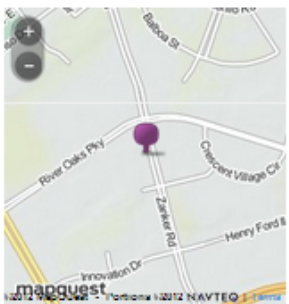
No Notes

Devices4

Asset	OS Version	Last Check-in	Status	Owned By	Location
Satya's iPhone 4S	6.0	8 day(s) ago	✓	wyselab	1306 Shreen Ct, San Jose, California, 95124 Last Updated: 10/29/12 6:06 AM
Satya's Win8 phone	8.0	8 day(s) ago	✖	wyselab	Not reported
Satya's Dell Streak	3.2	8 day(s) ago	✓	wyselab	152 River Oaks Pkwy, San Jose, California, 95134 Last Updated: 10/29/12 7:06 AM
sjc-satya-windows-7	7.1_204.03	8 day(s) ago	✖	wyselab	Not reported

Alerts4

Current Location



Satya's Motorola phone
152 River Oaks Pkwy, San Jose, California, 95134
(Lat: 37.404, Long: -121.934)
Last Updated: 10/29/12 7:06 AM

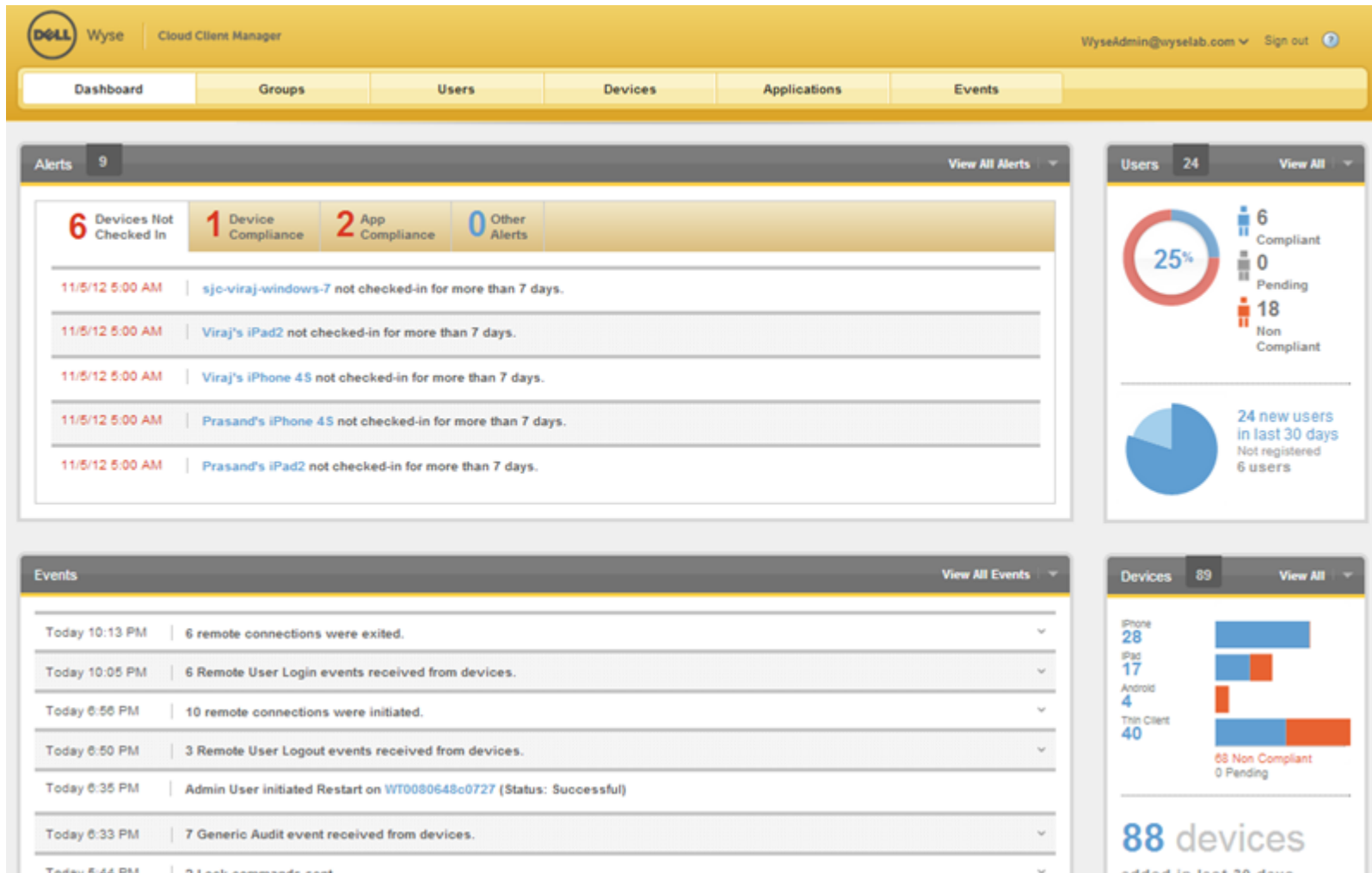
No Restricted Apps installed

Recently used Thin Clients

Today
None

Last 7 Days
None

Intuitive administrator dashboard, real-time alerts and detailed audit trails.



Simple group-based management, across a large variety of users and devices.

The screenshot displays the Wyse Cloud Client Manager interface. At the top, the navigation bar includes the Wyse logo, the text 'Wyse Cloud Client Manager', the user 'WyseAdmin@wyselab.com', and a 'Sign out' button. Below the navigation bar is a tabbed interface with tabs for 'Dashboard', 'Groups', 'Users', 'Devices', 'Applications', and 'Events'. The 'Groups' tab is active.

The main content area is titled 'Policy Groups'. It features a 'Filter by:' section on the left with a dropdown menu showing 'All Policy Types', 'iOS', 'Android', and 'Thin Client'. A 'Create Group' button is located next to the filter. The main area displays a list of policy groups. The first group is 'Global Policy', which has a registration key of '<DISABLED>' and a description 'All users and devices are managed under this profile'. It shows 'All Policies (1)', 'iOS (0)', 'Android (0)', and 'Thin Client (1)'. The second group is 'Engineering', with a registration key of 'wlab-TC-TEST-ENG' and a description 'Engineering Self Service Group'. It shows 'All Policies (10)', 'iOS (1)', 'Android (2)', and 'Thin Client (7)'. The third group is 'Product Management', with a registration key of 'wlab-12345678' and a description 'Product Management Group'. It shows 'All Policies (10)', 'iOS (1)', 'Android (2)', and 'Thin Client (7)'. Each group has an 'Edit Policies' link.

On the right side, there is a 'Group Stats' sidebar. It shows '6 policy groups in the system' and a list of groups with their user and device counts: Global Policy (0 users, 0 devices), Engineering (15 users, 48 devices), Product Management (1 users, 1 devices), QA Group (7 users, 24 devices), MTL (1 users, 1 devices), and BJ SQA (0 users, 17 devices). Below this, it shows '2 group(s) with compliance alerts': Engineering (12 users out of compliance, 44 devices out of compliance) and QA Group (6 users out of compliance, 24 devices out of compliance).



Granular user and device centric drill-downs.

The screenshot displays the Dell Wyse Cloud Client Manager interface, which is divided into two main sections: Device Detail and Users.

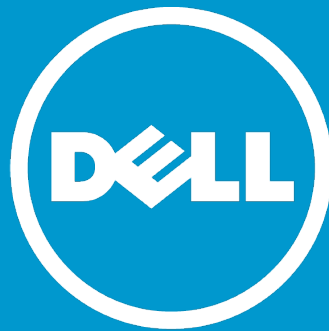
Device Detail Section:

- Device Information:** Device Name: WT0080644a700e, Device Type: Thin Client (TX0), OS Version: 7.1.204, Owned by: wyselab (assigned to BJ SQA).
- MAC Address:** 0080644a700e
- IP Address:** 10.151.122.104
- Connection Type:** 1000 FX
- Last Check-in:** 13 minute(s) ago
- Compliance Status:** Compliant
- Current Location:** A map showing the device's location.
- Actions:** Query, Lock, Restart, Unregister, Wipe.

Users Section:

- Filter by:** Active, Inactive, Compliant, Pending, Non-Compliant, Recently Added, Not Registered.
- Groups:** Global Policy, Engineering, Product Management, QA Group, MTL, BJ SQA.
- User List:** A table showing user details, including Name, # Devices, Group, Created, Status, and Active.
- User Detail Pop-up:** A pop-up window for user "Yuan Ding" showing their login name (yding@wyselab.com), email address (yding@wyselab.com), status (Active), group (Engineering), and a list of devices (Yuan's Motorola phone, sjc-yuan-windows-7, sjc-yuan-ubuntu).
- Summary:** A summary of user statistics, including 15 total users, 3 compliant, 0 pending, and 12 non-compliant.
- Recent Activity:** A list of recent events, such as "W2K8/administrator logged into device WT0080644a700e" and "2 remote connections were exited."





The power to do more

www.dell.com/wyse