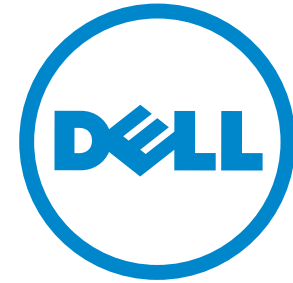





# Dell Wyse T class

The new standard for powerful,  
economical thin clients.



Dell Wyse T class:  
All you need to know. Here: 

# Introducing the Dell Wyse T class

## The new standard for entry level.

### Great to use. Great to manage

Dell Wyse T class thin clients deliver an exceptional Citrix, Microsoft, and VMware VDI user experience with unparalleled security, ease of use, and ease of management – on a budget. Two products are available: the Dell Wyse T10 with Dell Wyse ThinOS, and the Dell Wyse T50 with Dell Wyse enhanced Ubuntu™ Linux.

Users will find them easy to live with too; enjoying vibrant multimedia and Flash that plays in VDI, the power of their Marvell ARMADA™ PXA 510 v7 1.0 GHz System-on-Chip (SoC) processors and the hands-off support provided by Dell Wyse Automated Management capability.



### Dell Wyse T10

Features ThinOS for fast performance with instant-on start up, easy centralized configuration, total security and an exceptional entry-level client for Citrix XenDesktop, VMware View, and Microsoft Remote Desktop Services (RDS).



### Dell Wyse T50

Features a fast and simple user interface, a Chromium web browser and the strong security of Dell Wyse enhanced Linux, as well as browser-based connectivity to SaaS-based apps, and local execution via a VPN.



Start

Models

Features

Technical

Contact

Print

# Features Dell Wyse T class

## The best user experience. On a budget.

Dell Wyse T class thin clients are compact, affordable and flexible entry level desktop devices. They deliver the best Web, Citrix, Microsoft and VMware VDI user experience and performance to IT executives needing to equip their task workers with an enterprise-standard client on a budget. They deliver this with an array of features found across premium range Dell Wyse cloud clients.

Performance



Connectivity



Mounting options



Green



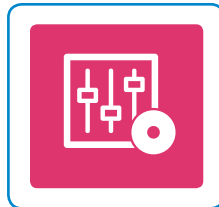
T10: Dell Wyse ThinOS



T50: Dell Wyse enhanced Ubuntu™ Linux



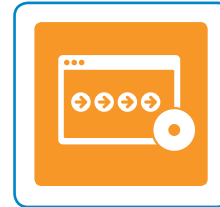
Management



User experience optimization



User experience acceleration



Take a tour of  
the T class range



Start

Models

Features

Technical

Contact

Print

# Performance

## No compromise performance boost.

The Dell Wyse T class features a Marvell ARMADA™ PXA 510 v7 1.0 GHz system-on-chip (SoC) delivering better performance than the older 1.2GHz technology over remote protocols like RDP.

Coupled with its built-in hardware media processor it delivers smooth multimedia, bi-directional audio and Flash playback performance.

**ARMADA  
v7**

### Dell Wyse T class processor

Featuring an ARMADA™ PXA 510 v7 1.0 GHz SoC and is ready to work in under 20 seconds (under 5 seconds on the T10).



[Continue tour](#)



[Start](#)

[Models](#)

[Features](#)

[Technical](#)

[Contact](#)

[Print](#)

# Connectivity

## Dell Wyse T class standard configuration: connects right out of the box.

Unlike other entry level budget clients, The T class arrives ready to connect to a huge array of environments including web based applications and services and work seamlessly within Citrix, Microsoft and VMware environments. Users can enjoy two monitors using the DVI-I display option and high speed networking with support for Gigabit Ethernet and optional integrated b/g/n WiFi.



Front of device

SD card slot  
(T50 only)

2 USB 2.0 ports

Output: 1/8-inch mini jack

Input: 1/8-inch mini jack,  
8 bit stereo microphone

RJ45 (10/100/1000Mbps)  
network port

Kensington  
lock slot

Optional 802.11  
b/g/n wireless

2 USB 2.0 ports

DVI-I port



Continue tour



Start

Models

Features

Technical

Contact

Print



# Mounting options

The Dell Wyse T class family can be placed horizontally or vertically (with optional feet) on desktops, mounted to walls and even behind monitors.



## Horizontal

Included as standard and allows for simple horizontal placement.



## Vertical

Dell Wyse T class clients are available with optional feet for vertical use.

## Back of monitor or wall mounting

The horizontal stand (included as standard) enables mounting to the rear of a monitor (this requires the four industry standard mounting points to be free). The same bracket can be used for wall mounting.



[Continue tour](#)



[Start](#)

[Models](#)

[Features](#)

[Technical](#)

[Contact](#)

[Print](#)

# Desktop computing Without compromise



## That's Dell Wyse EarthSmart™ computing

Through our EarthSmart computing initiative we are committed to helping organizations implement a greener computing strategy – one that delivers a more efficient and productive computing experience for your users with a positive effect on energy wastage, heat and carbon emissions.

### Energy efficient

From reduced manufacturing impact and end-of-life recycling waste, to as little as 7 watts energy consumption in service, deploying Dell Wyse T class thin clients will enable your organization to achieve a lighter carbon footprint.

## More information

Download carbon calculators, fact sheets and white papers from here:  
[www.wyse.com/green](http://www.wyse.com/green)



Continue tour



Start

Models

Features

Technical

Contact

Print

dellwyse.com

# Operating systems Dell Wyse ThinOS 7.1

**Dell Wyse ThinOS is the most secure, management-free solution for cloud and virtual computing environments with built-in support for the latest infrastructures including Citrix, Microsoft, VMware and other vendors.**

## **Fast. Simple. Secure.**

This fast, purpose-built cloud client computing platform boots up in seconds, updates itself automatically, and provides IT managers with simple, scalable administration to suit their organization's needs. Security is assured too as there's no published API – giving you an environment that's immune from viruses and malware.

Management is simple with time consuming tasks such as software and configuration updates automated via central file servers (ftp, http, and https) where Dell Wyse thin clients can check-in for their updates. So, whether you have 100, 1000, or 10,000 devices, rolling out a new update is as easy as dropping a file onto your file server.

## **New Zero Launchpad optimizes virtual desktop deployments**

By harnessing the power of the Dell Wyse Zero engine, ThinOS delivers fast and secure virtual desktops with user experiences based upon an individual's access levels.

Logging on is fast and easy too with no double desktop dramas. There's just one screen for inputting credentials before users are immediately presented with their assigned desktop(s). Finally, the Dell Wyse Zero toolbar gives advanced users the option to switch between multiple virtual desktops or modify local settings (e.g. display resolution) – all without leaving their virtual desktop environment.

## **Innovative, user-oriented and productive features**

### **Instant-on, simple access for users**

- The Zero launchpad and Zero toolbar adapt to provide simple and advanced access depending on user privileges.
- With class-leading boot-up times, users are ready to login in seconds.

### **Automated Management**

- ThinOS enables simple, scalable device management from day one without the need for complex management software.
- For enterprise management ThinOS features complete integration with Dell Wyse Device Manager.

### **Security**

- Featuring an unpublished API and no local file system, ThinOS is inherently secure providing maximum security against malware and viruses.
- Secure remote access using Citrix Access Gateway (CSGEE mode) or VMware Security Server, including dual factor authentication with RSA SecureID.

### **Industry best Citrix HDX, View, and RDP in a non-windows client**

- Support for latest HDX features including ICA UDP audio, accelerated multimedia playback, USB webcam remoting, new audio codecs for VoIP, dual factor authentication, etc.
- Dell Wyse is the only vendor with an RDP 7.1 compatible client on non-windows OS – other vendors use RDESKTOP (based on RDP 6.x)
- ICA and RDP performance outperforms other non-windows clients by 3x (on comparable hardware).
- Enhance existing protocols further with Dell Wyse TCX (i.e. multicasting, high latency optimization, USB redirection into terminal server, etc)

[Continue tour](#)



Start

Models

Features

Technical

Contact

Print



# Operating Systems Dell Wyse enhanced Ubuntu Linux\*

**Dell Wyse enhanced Ubuntu Linux is a simple, secure, and easy to manage platform designed for customers looking for flexibility and support of the latest protocols (ICA, RDP, etc) without the need for a Windows-based thin client.**

## **Simple 'Hands-off' management**

Deploying, managing, and updating Ubuntu Linux is easier than any other thin-Linux distribution, Period. Utilizing Dell Wyse's proven automatic update and configuration approach, management tasks can be handled centrally and easily without any management software required.

Updating 1 or 1,000 thin clients is as simple as dragging and dropping a file into a folder. For customers that desire a little more hands-on approach (such as asset tracking, reporting, etc) then integration with Dell Wyse Device Manager is built-in.

## **Security**

It's designed with security in mind. IT managers are able to provide a locked-down experience, smartcard login to virtual environments, VPN connectivity, and leverage a read-only file system that protects against data loss, theft and virus attacks.



## **Enterprise-quality Linux optimized by Dell Wyse**

And it is the only enterprise-quality Linux platform optimized for cloud client computing, created by combining the security and flexibility of Ubuntu Linux with Dell's cloud client computing leadership and innovation in user experience and simplified management.

## **Flexible, Multi-Protocol Support**

Being built from a standard enterprise-quality Linux distribution means support for a wide range of protocols and infrastructures straight-out-of-the-box including Citrix, Microsoft and VMware – allowing you to mix-and-match connections from a single image.

## **That's Dell Wyse enhanced Ubuntu Linux**

The only enterprise-quality Linux platform, optimized by Dell cloud client computing.

\*Ubuntu™ is a registered trade mark of Canonical Group Limited

[Continue tour](#)



Start

Models

Features

Technical

Contact

Print

[dellwyse.com](http://dellwyse.com)

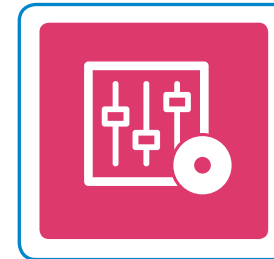
# Thin client management Dell Wyse Device Manager

Dell Wyse Device Manager (WDM) addresses key management requirements for deploying powerful thin clients. With its centralized management and administration WDM helps IT departments deliver effective remote thin client support while minimizing end user downtime.

**Security is assured with HTTPS based imaging, updates and downloads.**

## WDM delivers organization-wide benefits:

<b>Operations</b>	Centralized management. Collect and organize asset information.
<b>Administration</b>	Health status reports. Automated client settings. Update client firmware and add applications.
<b>End User IT Costs</b>	Easy, effective remote support. Create custom scripts and packages.
<b>Minimize downtime</b>	Restart or reset thin clients in less than a minute. Enforce policies. Minimize user errors.



## At a glance features

- **Security**
  - HTTPS based imaging / updates
  - Fully encrypted network traffic
  - Delegated admin access (MS AD) support
- **No-Hassle deployment**
  - Complete device imaging / patching / updates
  - Bandwidth throttling for efficiency / reliability
  - Software updates and add-ons
- **Device administration and monitoring**
  - Device health status / reporting
  - Remote shadowing / control
  - Default device configuration
- **Reduce end user IT costs**
  - Reduce energy consumption with scheduled up/down times
- **Scalability**
  - Distributed architecture
  - Microsoft SQL database support
  - Multiple remote repository support
- **Complete asset visibility**
  - Automated device discovery
  - Detailed hardware asset information
  - Installed software asset information

Continue tour



Start

Models

Features

Technical

Contact

Print

# User experience optimization Dell Wyse TCX Suite

with Dell Wyse Collaborative Processing Architecture

## Dell Wyse TCX delivers an optimal user experience in one software suite.

The TCX suite enriches the user experience by removing the limitations previously associated with thin clients. It enhances, not replaces, key protocols like ICA/HDX and RDP by adding key features to help make each more valuable.



### Multi-display

Ensures application windows and dialog boxes are multi-monitor aware when using more than one monitor.

### USB Virtualization

Enables plug and play peripheral support for virtual desktop environments.

- Redirect and use local USB devices in virtual desktops.
- Deploy virtual desktops to knowledge workers with special device access needs.
- Enable a broad set of USB peripherals including webcams and headsets.

### Multimedia acceleration

Streamlines the delivery of video and audio content to the local client for a rich user experience within a thin client computing architecture.

- Accelerates Mpeg1, Mpeg2, WMV, Mpeg4 Part 2, AC3, AAC, MP3, WAV, WMA media types.
- Collaborative Processing Architecture enhances server scalability, and network utilization by off-loading multimedia rendering to the client.

### Flash redirection

Flash redirection helps thin client users to experience excellent Flash video performance. Flash redirection allows web-based Flash video content to be fetched directly by the Dell Wyse thin client from the source where it is played locally. Users get outstanding Flash video performance while the VDI host system runs more efficiently.

### Bi-directional sound

Enables bi-directional audio in virtual desktop environments, enabling solutions such as VOIP, digital dictation or voice recognition to be deployed.

Continue tour



Start

Models

Features

Technical

Contact

Print

dellwyse.com

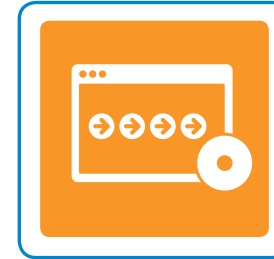
# Virtualization software Dell Wyse Virtual Desktop Accelerator

## Removing the barriers of network latency.

Dell Wyse Virtual Desktop Accelerator (VDA) enables virtualized desktop and thin computing environments to be deployed to areas where network latency has, to date, presented operational barriers. Now, with VDA, more users can receive the full benefits of Dell cloud client computing – with outstanding PC experience over virtualized desktops.

VDA is a software-only solution for Dell Wyse thin clients and supported PCs that delivers exceptional user experience for the allocated network bandwidth by neutralizing the effects of network latency and packet loss. Making 'thin' suitable for more remote-site, branch, or field-based users.

VDA works with instead of replacing existing RDP and ICA protocols, and is designed to offer significant acceleration over certain capacity-constrained WAN links.



## At a glance features

- Software-only acceleration of virtual desktops and applications
- Accelerates existing Citrix ICA and Microsoft RDP protocols
- Works on WANs and 'fat, long pipes'
- Accelerates connections to Citrix XenApp, Citrix XenDesktop, VMware View and Microsoft Terminal Server and Microsoft Hyper-V VDI
- Enhances Dell Wyse TCX software suite functionality across wide-area networks
- Enables Dell Wyse Collaborative Processing Architecture across wide-area networks
- Administrator console provides control of maximum bandwidth per connection
- Leverages built-in security of underlying protocols (128-bit encryption for RDP and ICA).

Continue tour



Start

Models

Features

Technical

Contact

Print

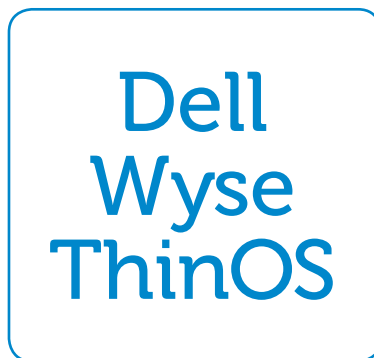
# Technical Dell Wyse T class specifications

Dell Wyse T class thin clients are configured to work with Dell Wyse ThinOS™ and Dell Wyse enhanced Ubuntu™ Linux operating systems.

**Want to learn more? Simply click the relevant icon.**



Dell Wyse T class  
hardware specifications



Dell Wyse T10  
software specifications



Dell Wyse T50  
software specifications



Start

Models

Features

Technical

Contact

Print



# Specifications

Processor	Marvell® ARMADATM PXA 510 v7 1.0 GHz system-on-chip (SoC)
Memory	T10: 0MB Flash / 1GB RAM DDR3 T50: 1GB Flash / 1GB RAM DDR3
Graphics	Integrated in SoC
Display	VESA monitor support with Display Data Control (DDC) for automatic setting of resolution and refresh rate T10: Single up to 1920x1200@60Hz; color depth: 32 bpp T10: Dual up to 1920x1200@60Hz; color depth: 32 bpp T50: Single up to 1920x1200@60Hz; color depth: 24 bpp T50: Dual up to 1920x1080@60Hz; color depth: 24 bpp Dual monitors support high-resolution displays. T10: Hardware accelerated monitor rotation support (L-Shaped Dual Monitors)* Dual monitors require optional monitor splitter cable (sold separately). T10: Dual displays with the optional splitter cable provides 1 digital display and 1 analog display
Networking/Comm	10/100/1000 Base-T Gigabit Ethernet Optional 802.11 b/g/n internal wireless (single antenna)
Security compliance	Security protocols supported for both wireless, and 802.1x network based authentication: T10: EAP-TLS; EAP-LEAP; EAP-PEAP, EAP-MSCHAPv2, EAP-GTC T10: WEP; WPA Personal; WPA2 Personal; WPA Enterprise; WPA2 Enterprise
I/O peripheral support	One DVI-I port, DVI to VGA (DB-15) adapter included Dual display support with optional DVI-I to DVI-D plus VGA-monitor splitter cable (sold separately) Four USB 2.0
Audio	Output: 1/8-inch mini jack, full 16-bit stereo, 48KHz sample rate Input: 1/8-inch mini jack, 8-bit microphone
Included	Enhanced USB keyboard with PS/2 mouse port and Windows keys PS/2 mouse

Factory options	802.11 b/g/n internal wireless (single antenna)
Mountings	Horizontal stand. The same stand can be used for VESA wall mounting. Optional vertical stand
Device security	Built-in Kensington security slot (cable sold separately)
Dimensions	Height: 1 in (25 mm) Width: 6.9 in (177 mm) Depth: 4.69 in (119 mm) Weight: 1.003 lbs (0.455 kg)
Shipping weight	6 lbs (2.7 kg)
Power	Worldwide auto-sensing 100-240 VAC, 50/60 Hz Energy Star V5.0 Phase V external and EuP compliant power adapter
Power consumption	Average power usage with device connected to 1 keyboard with 1 PS/2 mouse and 1 monitor: under 7.2 watts
Temperature range	Horizontal position: 50° to 95° F (10° to 35° C) Vertical position, power button up: 50° to 104° F (10° to 40° C) Storage: 14° to 140° F (-10° to 60° C)
Humidity	20% to 80% condensing 10% to 95% non-condensing
Certifications	Ergonomics: German EKI-ITB 2000, ISO 9241-3/-8 Safety: cULus 60950, TÜV-GS, EN 60950 RF Interference: FCC Class B, CE, VCCI, C-Tick Environmental: WEEE, RoHS Compliant
Warranty	Three-year limited hardware warranty. Optional WyseChoice extensions and upgrades at <a href="http://www.wyse.com/warranties">www.wyse.com/warranties</a> .
	* Only supported on T10.



Start

Models

Features

Technical

Contact

Print

# Software specifications Dell Wyse ThinOS 7.1

Citrix HDX ready client ICA 12 compatible	<ul style="list-style-type: none"><li>- UDP Audio</li><li>- Improved media flow control</li><li>- HDX plug-n-play</li><li>- Flash (server rendered)</li><li>- Progressive Display</li><li>- HDX IntelliCache</li><li>- Session reliability</li><li>- Access Gateway Support (direct LDAP or RSA authentication)</li><li>- Support for L-shaped desktop (and other rotated monitor set up)</li><li>- Granular control on HDX USB redirected devices</li></ul>	<ul style="list-style-type: none"><li>- User roaming</li><li>- HDX Mediastream</li><li>- HDX Realtime</li><li>- HDX Broadcast (Branch Repeater)</li><li>- Seamless Windows</li><li>- Desktop Restart (XenDesktop)</li><li>- Smartcard authentication &amp; redirection</li></ul>
RDP 7.1 compatible client	<ul style="list-style-type: none"><li>- Optimized for Windows 7</li><li>- Rich Multimedia (TS MMR)</li><li>- Up to 32-bit color depth connections</li><li>- RDP7 Bi-directional audio</li><li>- Flash Video support (with TCX)</li><li>- Broad USB Support (with Dell Wyse TCX)</li><li>- Smartcard authentication and redirection</li><li>- WAN Acceleration (with Dell Wyse VDA)</li></ul>	<ul style="list-style-type: none"><li>- Support for Microsoft RDS broker (including RemoteApp)</li><li>- RDP7 Multimedia</li><li>- True Multi-Monitor Support (incl. rotation)</li><li>- Network Level Authentication (NLA)</li></ul>
VMware View 4.5 client	<ul style="list-style-type: none"><li>- Smartcard Authentication</li><li>- SecureID Authentication</li><li>- Multimedia Support (with TCX)</li><li>- Bi-directional Audio (with TCX)</li><li>- WAN Acceleration (with VDA)</li></ul>	<ul style="list-style-type: none"><li>- SSL Tunneling</li><li>- Restart VM</li><li>- Broad USB Support (with TCX)</li><li>- Flash Video Support (with TCX)</li></ul>
Roaming smart card vendor support	Enables smart card users to not only roam from station to station but also access the same virtual environment regardless of which station they are connecting from. ThinOS provides 'out-of-the-box' smart card support for vendors such as Aladdin, and ActivIdentity – supported within Citrix, VMware and Microsoft environments. Users benefit from secure login and roaming desktop support so they can access their environments from any suitably equipped Dell Wyse thin computing environment. DoD CAC supported.	

Dell Wyse TCX Suite	Dell Wyse TCX Suite virtualization software works with and enhances HDX and RDP protocols featuring: <ul style="list-style-type: none"><li>- Multimedia: giving users the power to run rich multimedia files formats</li><li>- Multi-Display: windows and dialog boxes behave the way users expect across multiple displays.</li><li>- USB Virtualizer: client attached USB devices are visible to virtual desktops applications, and administrators, even on terminal servers!</li><li>- Rich Sound: receive and transmit high quality audio without compromise.</li><li>- Flash Acceleration: helps users to experience improved Flash performance.</li></ul>
Dell Wyse Virtual Desktop Accelerator	Neutralizes the effects of network latency and packet loss, making 'thin' more suitable for more remote-site, branch, or field-based users by boosting RDP and ICA performance up to 20 times on networks with latencies up to and exceeding 300ms and at least 768kbps bandwidth.
Management made easy	Fast booting, scalable administration includes simple drag and drop placement of firmware, automatic updates via file server and full integration with Dell Wyse Device Manager.
Security built in	<ul style="list-style-type: none"><li>- With no published API ThinOS is inherently secure from viruses and malware.</li><li>- ThinOS includes robust wired and wireless 802.1x support, with secure encryption for simple installation and management.</li><li>- DoD CAC supported.</li><li>- Although there is no local file system, certifications and configuration data can be stored locally. Leveraging AES 128 bit encryption, with a random number generator, any local data will be secure.</li></ul>
Server OS Infrastructure support	<ul style="list-style-type: none"><li>- Citrix XenDesktop 4.0 – 5.5</li><li>- Citrix XenApp 4.5 – 6.5</li><li>- Citrix Presentation Server</li><li>- Microsoft Windows Terminal Server 2003 &amp; 2008/R2</li><li>- VMware View 4.0 – 5.0</li><li>- Support for other leading VDI brokers (Quest Software etc)</li></ul>

[Start](#)[Models](#)[Features](#)[Technical](#)[Contact](#)[Print](#)

# Software specifications Dell Wyse enhanced Ubuntu Linux\*

Firmware features	Dell Wyse Enhanced Ubuntu* Linux Simple recovery (factory settings) Chromium local browser Flash capable Dell Wyse RDP client (RDP 7 compatible) Citrix HDX 12.0 (HDX Ready certified) VMWare View Open client compatible with View 4.5 (RDP) Dell Wyse TCX compatible	
HDX Ready client ICA 12.0 compatible	<ul style="list-style-type: none"><li>- UDP audio</li><li>- Improved media flow control</li><li>- HDX plug-n-Play</li><li>- Flash (server rendered)</li><li>- Progressive display</li><li>- HDX IntelliCache</li><li>- Session reliability</li><li>- Access Gateway support (direct LDAP or RSA authentication)</li><li>- Support for L-shaped desktop (and other rotated monitor set up)</li><li>- Granular control on HDX USB redirected devices</li><li>- User roaming</li><li>- HDX Mediastream</li><li>- HDX Realtime</li><li>- HDX Broadcast (Branch Repeater)</li><li>- Seamless Windows</li><li>- Desktop Restart (XenDesktop)</li><li>- Smartcard authentication &amp; redirection</li></ul>	
RDP 7 compatible client	<ul style="list-style-type: none"><li>- Optimized for Windows 7</li><li>- Rich multimedia (TS MMR)</li><li>- Up to 32-bit color depth connections</li><li>- RDP7 Bi-directional audio</li><li>- Flash video support (with TCX)</li><li>- Broad USB Support (with Dell Wyse TCX)</li><li>- Smartcard authentication and redirection</li><li>- WAN acceleration (with Dell Wyse VDA)</li><li>- Support for Microsoft RDS broker (including RemoteApp)</li><li>- RDP7 multimedia</li><li>- True multi-monitor Support (incl. rotation)</li><li>- Network Level Authentication (NLA)</li></ul>	

Dell Wyse TCX Suite	Dell Wyse TCX Suite virtualization software works with and enhances HDX and RDP protocols featuring: <ul style="list-style-type: none"><li>- Multimedia: giving users the power to run rich multimedia files formats</li><li>- Multi-display: windows and dialog boxes behave the way users expect across multiple displays.</li><li>- USB virtualizer: client attached USB devices are visible to virtual desktops applications, and administrators, even on terminal servers.</li><li>- Rich sound - receive and transmit high quality audio without compromise.</li><li>- Flash acceleration: helps users to experience improved Flash performance.</li></ul>
Management made easy	Fast booting, scalable administration includes simple drag and drop placement of firmware, automatic updates via file server and full integration with Dell Wyse Device Manager.
Server OS Infrastructure support	<ul style="list-style-type: none"><li>- Citrix XenDesktop 4.0–5.5</li><li>- Citrix XenApp 4.5–6.5</li><li>- Citrix Presentation Server</li><li>- Microsoft Windows Terminal Server 2003 &amp; 2008/R2</li><li>- VMware View 4.0–5.0</li><li>- Support for other leading VDI brokers (Quest Software, Leostream, etc.)</li></ul>
	* Ubuntu™ is a registered trade mark of Canonical Group Limited



Start

Models

Features

Technical

Contact

Print



# Contact Dell Wyse.

## Dell Wyse

3471 North First Street,  
San Jose,  
CA 95134-1801

## Visit our website at:

<http://www.dellwyse.com> or  
send email to: [sales@wyse.com](mailto:sales@wyse.com)

## Dell Wyse Sales

1-800-438-9973

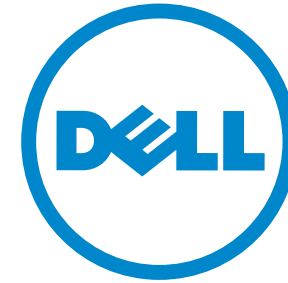
## International customers please dial:

00 1 408 473 1200

## Dell Wyse Support Portal

Dell Wyse Support Portal provides a fast and accurate way to communicate interactively with Dell Wyse Customer Support, and helps us respond to your requests more quickly.

<http://support.wyse.com/selfservice.html>



Wyse

Dell Wyse offers cloud client computing sales, service and support expertise around the globe. Click for contact details.

## About Dell

Dell Inc. (NASDAQ: DELL) listens to customers and delivers innovative technology and services that give them the power to do more. For more information, visit [www.dell.com](http://www.dell.com)

©2013 The Dell Wyse logo and references are trademarks of Dell Wyse. Other product names mentioned herein are for identification purposes only and may be trademarks and/or registered trademarks of their respective companies. All specifications are subject to change without notice. Whilst we make every effort to ensure the accuracy of the details, specifications, models, images and benefits featured in this datasheet, we cannot be held responsible for any errors and/or omissions. If you have any queries regarding Dell Wyse products please contact your authorized regional Dell Wyse Partner. Some features require support by server operating system and protocol.

Approved final 090713.

Start

Models

Features

Technical

Contact

Print

[dellwyse.com](http://dellwyse.com)

# Dell Wyse T class

## The best user experience on a budget

The Dell Wyse T class thin clients are compact, affordable and flexible entry level thin clients. They deliver the best web, Citrix, Microsoft and VMware VDI user experience and performance to IT executives needing to equip their task workers with an enterprise standard client on a budget. They deliver this with an array of features found across premium range Dell Wyse cloud clients.

## Great to use, great to manage

Dell Wyse T class thin clients deliver an exceptional Citrix, Microsoft, and VMware VDI user experience with unparalleled security, ease of use, and ease of management – on a budget. Two operating systems are available: Dell Wyse ThinOS and Dell Wyse enhanced Linux. Users will find them easy to live with too; enjoying vibrant multimedia and Flash that plays in VDI, the power of their Marvell ARMADA™ PXA 510 v7 1.0 GHz system-on-chip (SoC) and the hands-off support provided by Dell Wyse Automated Management capability.

All Dell Wyse T class thin clients are RDP 7 compatible – unique for entry level clients.

## No compromise performance boost

The Dell Wyse T class features a Marvell ARMADA™ PXA 510 v7 1.0 GHz system-on-chip (SoC) delivering 150% better performance than the older 1.2GHz technology over remote protocols like RDP.

Coupled with its built-in hardware media processor it delivers smooth multimedia, bi-directional audio and Flash playback performance.

## Connects right out of the box

Unlike other entry level budget clients, the T class arrives ready to connect to a huge array of environments including web based applications and services and work seamlessly within Citrix, Microsoft and VMware environments. Users can enjoy two monitors using the DVI-I display option and high speed networking with support for Gigabit Ethernet and optional integrated b/g/n WiFi.

## Saves budget and saves the environment too

Dell Wyse T class thin clients deliver great value from day one and will keep on doing so with a lower TCO than other solutions. All while delivering vital green credentials with its ENERGY STAR Version 5.0 and EPEAT compliance.

## At a glance

### Performance

Dell Wyse T class features a Marvell ARMADA™ PXA 510 v7 1.0 GHz system-on-chip (SoC) delivering better performance than the older 1.2GHz technology, over remote protocols like RDP.

### Operating systems

Two operating systems are available: Dell Wyse ThinOS (T10), and Dell Wyse enhanced Linux (T50)

### Connectivity

DVI-I interface with optional splitter cable enabling use of 2 monitors. Four USB 2.0 ports, Gigabit Ethernet connectivity and optional WiFi 802.11 b/g/n support.

### Management

Features Dell Wyse auto-configuration and management software found on premium thin and zero clients. For customers that desire a little more hands-on approach (such as asset tracking, reporting, etc) then integration with Dell Wyse Device Manager is built-in.

### Multimedia performance

Hardware accelerated video decoding for smooth multimedia VC1/WMV9, and H.264 playback.

### Energy efficient

Energy Star Version 5.0 and EPEAT compliance.



The new standard for powerful, economical thin clients.



# Specification

## Dell Wyse T class thin clients

Processor	Marvell® ARMADA™ PXA 510 v7 1.0 GHz system-on-chip (SoC)
Memory	T10: 0MB Flash / 1GB RAM DDR3 T50: 1GB Flash / 1GB RAM DDR3
Graphics	Integrated in SoC
Display	VESA monitor support with Display Data Control (DDC) for automatic setting of resolution and refresh rate T10: Single up to 1920x1200@60Hz; color depth: 32 bpp T10: Dual up to 1920x1200@60Hz; color depth: 32 bpp T50: Single up to 1920x1200@60Hz; color depth: 24 bpp T50: Dual up to 1920x1080@60Hz; color depth: 24 bpp Dual monitors support high-resolution displays. T10: Hardware accelerated monitor rotation support (L-Shaped Dual Monitors)* Dual monitors require optional monitor splitter cable (sold separately). T10: Dual displays with the optional splitter cable provides 1 digital display and 1 analog display
Networking/Comm	10/100/1000 Base-T Gigabit Ethernet, Optional 802.11 b/g/n internal wireless (single antenna)
Security compliance	Security protocols supported for both wireless, and 802.1x network based authentication: T10: EAP-TLS; EAP-LEAP; EAP-PEAP, EAP-MSCHAPv2, EAP-GTC T10: WEP; WPA Personal; WPA2 Personal; WPA Enterprise; WPA2 Enterprise
I/O peripheral support	One DVI-I port, DVI to VGA (DB-15) adapter included Dual display support with optional DVI-I to DVI-D plus VGA-monitor splitter cable (sold separately) Four USB 2.0
Audio	Output: 1/8-inch mini jack, full 16-bit stereo, 48KHz sample rate Input: 1/8-inch mini jack, 8-bit microphone
Included	Enhanced USB keyboard with PS/2 mouse port and Windows keys, PS/2 mouse
Factory options	802.11 b/g/n internal wireless (single antenna)
Mountings	Horizontal stand. The same stand can be used for VESA wall mounting. Optional vertical stand
Device security	Built-in Kensington security slot (cable sold separately)
Dimensions	Height: 1 in (25 mm)      Width: 6.9 in (177 mm) Depth: 4.69 in (119 mm)      Weight: 1.003 lbs (0.455 kg)
Shipping weight	6 lbs (2.7 kg)
Power	Worldwide auto-sensing 100-240 VAC, 50/60 Hz, Energy Star V5.0 Phase V external and EuP compliant power adapter
Power consumption	Average power usage with device connected to 1 keyboard with 1 PS/2 mouse and 1 monitor: under 7.2 watts
Temperature range	Horizontal position: 50° to 95° F (10° to 35° C) Vertical position, power button up: 50° to 104° F (10° to 40° C) Storage: 14° to 140° F (-10° to 60° C)
Humidity	20% to 80% condensing, 10% to 95% non-condensing
Certifications	Ergonomics: German EKI-ITB 2000, ISO 9241-3/-8 Safety: cULus 60950, TÜV-GS, EN 60950 RF Interference: FCC Class B, CE, VCCI, C-Tick Environmental: WEEE, RoHS Compliant
Warranty	Three-year limited hardware warranty. Optional WyseChoice extensions and upgrades at <a href="http://www.wyse.com/warranties">www.wyse.com/warranties</a> .
* Only supported on T10.	



Learn more: Contact Dell Wyse at [sales@wyse.com](mailto:sales@wyse.com) or call 1-800-438-9973

dellwyse.com

Dell Wyse  
3471 North First Street  
San Jose, CA 95134-1801

Visit our website at:  
<http://www.dellwyse.com>  
Or send email to: [sales@wyse.com](mailto:sales@wyse.com)

Dell Wyse Sales  
1-800-438-9973

